

## Technical Parameter

Type	iReal 2E		
Light source	Category	Infrared VCSEL structured light	
	Visibility	Invisible	
	Safety	CLASS I (eye-safe) <sup>①</sup>	
	Technology	Infrared linear-array structured light	
	Color scanning	Support	
Scanning features	Alignment modes without markers <sup>②</sup>	Texture/feature/mixed alignments	
	Human body scanning	Invisible light/hair/dark environment scanning; automatically remove the layers of body shaking	
	Medium/large-sized object <sup>③</sup>	Optimal scanning distance range 300 mm ~ 500 mm	
		Effective working range 280 mm ~ 1000 mm	
Measurement rate	Maximum	1,500,000 points/s	
Detail	Point distance	0.200 mm ~ 3 mm	
Accuracy	Basic accuracy	Up to 0.100 mm	
	Alignment accuracy <sup>④</sup>	Up to 0.300 mm/m	
Data output	Output formats	OBJ, STL, PLY, ASC, SK	
	3D printing	Support	
Hardware	Working temperature	0°C ~ 40°C	
	Interface mode	USB 3.0	
	Weight	850 g	
	Dimensions	140 mm × 94 mm × 258 mm	
	Structure	3 sets of invisible light sources & camera groups & auxiliary lights	
	Working power supply	INPUT	100 - 240VAC, 50 / 60Hz
		OUTPUT	24 = 3.75A, 90W MAX

### Description:

- ① Class1 LASER is a low-energy light source device, which has no biological hazards and will not cause damage to the human body or skin.
- ② When the item has continuous, non-repetitive, rich and varied geometric features/texture features, it can be directly scanned without sticking points.
- ③ Maximum size of a single scan: recommended not to exceed 4 m. If the item size or data is too large, it can be spliced after part scanning.
- ④ It supports marker point splicing. The deviation value (Alignment Accuracy) is calculated by measuring the center of the standard sphere under marker point splicing mode.

# SCANTECH™

## I REAL 2E

## Color 3D Scanner

Infrared • Invisible Light • Large FOV



### SCANTECH (HANGZHOU) CO., LTD

Building 12, No.998, West Wenyi Road, Yuhang District, Hangzhou,  
Zhejiang Province, China  
Tel: 0086-571-85852597 Fax: 0086-571-85370381  
E-mail : info@3d-scantech.com  
Website : www.3d-scantech.com

SCANTECH™

Copyright ©

# iREAL 2E

iReal 2E maximizes the performance in depth of field, scanning area, algorithm, texture reproduction and detail capturing, specially designed for medium to large-sized objects and human body 3D scanning.

iReal 2E adopts the Infrared VCSEL structured light technology to bring you the safest and most comfortable 3D scanning experience. Without attaching markers, a quick texture capturing and geometry acquisition can be achieved. Mixed alignment modes meet various scanning situations.



## Digital Artist

Professional Entry-Level Handheld Color & Large Scanning Area & Human Body 3D Scanner

## 3D Digital Solution

### Body scan

Customization and re-creation of artistic portraits (bronze portraits, 3D printed portraits, sculptural portrait scene reproduction, etc.)

Film, video, game, VR, AR and other CG character modeling (can be combined with motion capture system)

Medical rehabilitation (spine orthopedics, neck brace, prosthesis, arm immobilizer, orthopedic helmet, etc.)

Human body parts customization (clothing customization, film and television armor customization, etc.)

### Art design

Medium and large sculptures (stone sculptures, urban sculptures, foam sculptures, clay sculptures, etc.)

Cultural relics (statues, parts of relics, parts of ancient buildings)

College art training, Clothing design, creative design, and derivative product development, etc.

## Product Features

### Super large field of view

The largest scanning area is 580 X 550mm, and the large wide-angle field of view enables it to scan medium and large objects quickly and accurately.

### Greater depth of field

720mm scanning depth of field and better operation smoothness help you get started easily.

### Smoother splicing ability

Using a new generation of 3D sensors and algorithm optimization, the data collection speed is as high as 1,500,000 points per second.

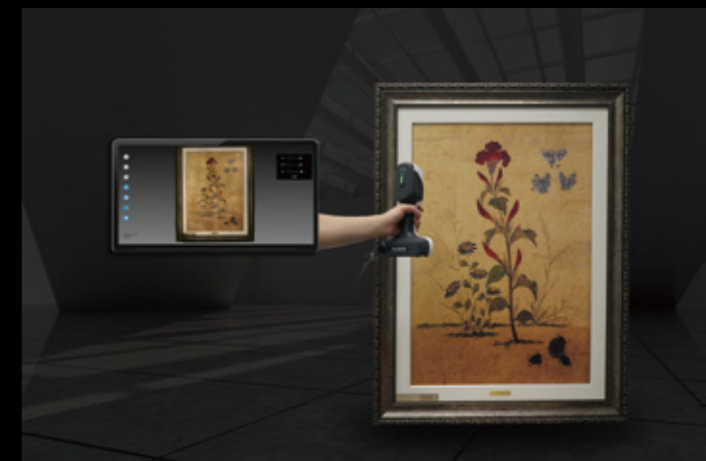
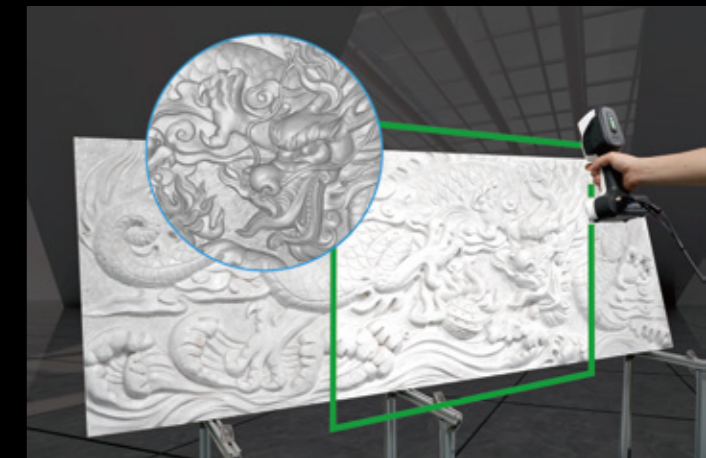
The characteristics of singleframe acquisition are more abundant, the splicing is smoother, and the scanning efficiency is higher.

### "Invisible" scanning

Infrared VCSEL structured light is safe and invisible to human eyes, and the scanning process is more comfortable and safer.

### Super black and hair scanning ability

Using the combined array structured light technology, it has stronger material adaptability, not only can scan more black material items, but also creatively solve the problem that other light sources are difficult to obtain when scanning.



### Digital acquisition analysis

Plant growth morphology analysis (trunks and potted plants)

Forensic identification (measurement of human trauma area, footprint identification)

Medical diagnosis (spine correction screening)

3D comparative analysis of local body shape changes

Monitoring and analysis of cultural relic morphology

### More application exploration

Car mat, luggage rack customization

Furniture three-dimensional display auxiliary modeling (such as sofa)

Data acquisition for 3D printing, etc.